

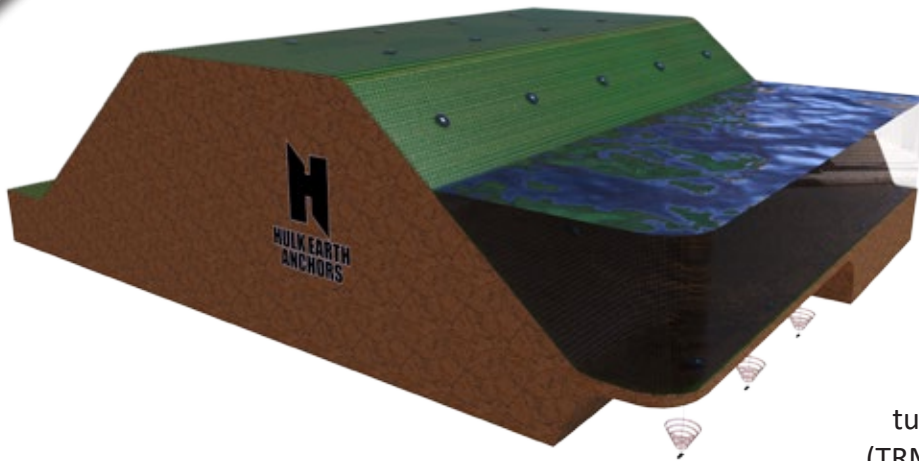


# HULK Earth Anchors

## TURF REINFORCEMENT ANCHORS

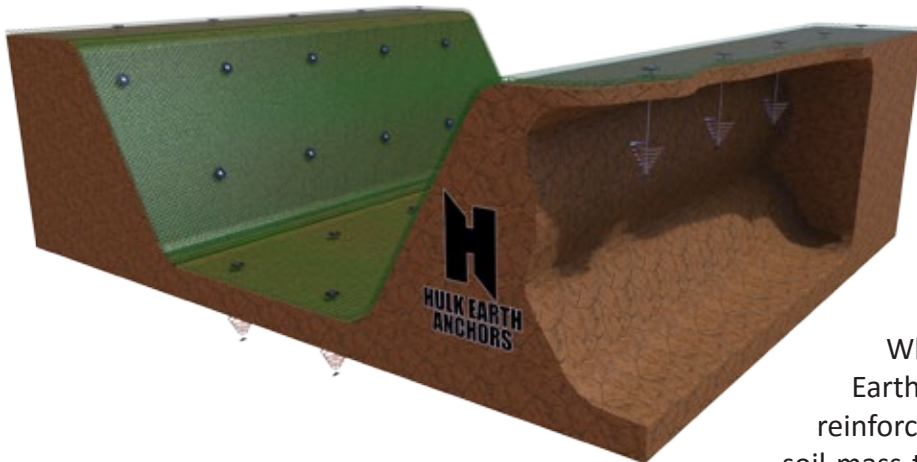
- No digging or soil disturbance.
- Fast labour saving installation.
- Suits all soil conditions.
- Corrosion resistant and fully customisable.

### LEEVE REINFORCEMENT



Hulk Earth Anchors are used to securely anchor turf reinforcement mats (TRM) to the subgrade and add to the integrity and design life of these systems. Due to the improved loads anchor reinforced TRM systems are able to withstand increased hydraulic stresses including higher water flows and wave impacts as well as improved resistance against non-hydraulic stresses such as debris flow, vehicle and equipment movement.

### STREAM, RIVER, CANAL BANKS



When used in structural applications Hulk Earth Anchors can be used to anchor the turf reinforcement mat to the subgrade and tie the soil mass together to provide improved stability and resistance to shallow plane failures.

### SHALLOW PLANE FAILURE

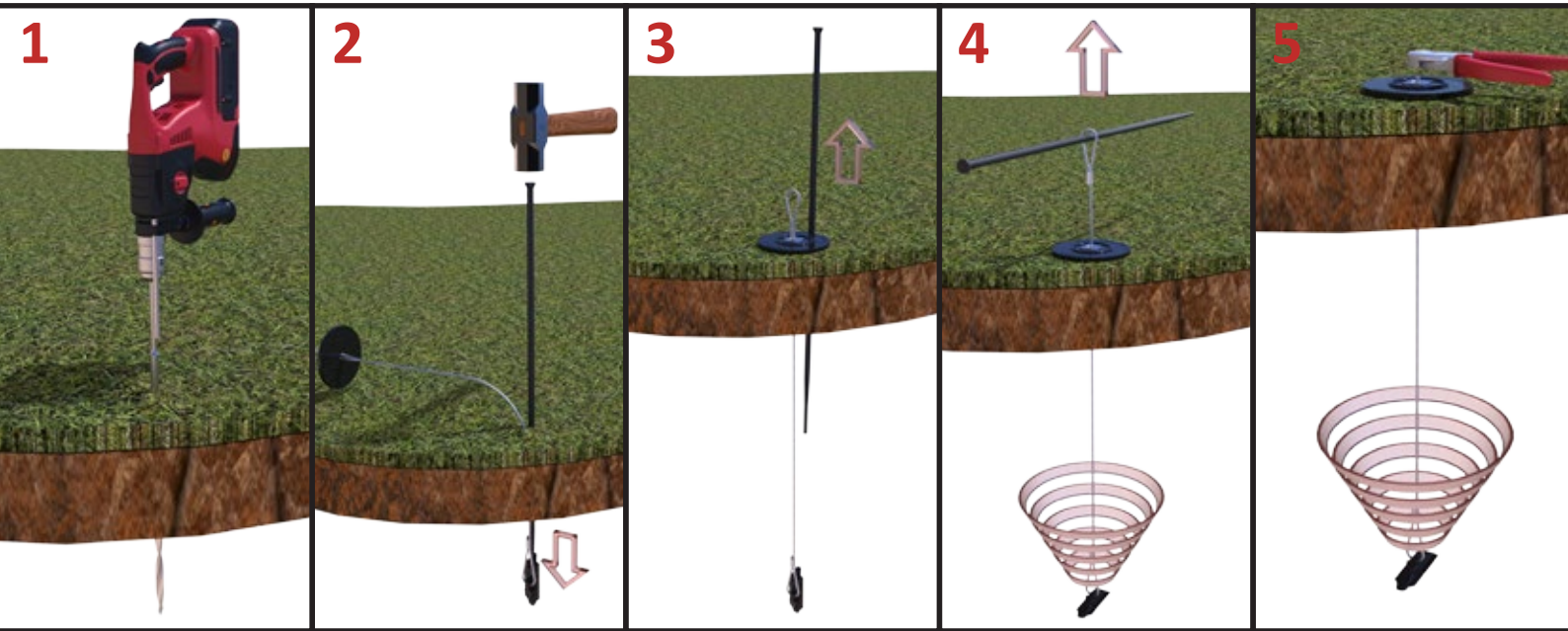


### HULK REINFORCED TRM



## INSTALLATION METHOD:

Labour and time saving Hulk Earth Anchors give the ultimate mechanical strength and extreme durability. Connected with stainless steel wire rope or a clevis and rod system for superior corrosion resistance, the Hulk soil stabilisation system offers an easy installation process involving a few simple steps:



1. Drill a pilot hole. This is an optional step which can improve the ease of installation of the Hulk Turf Reinforcement Anchor, especially in harder ground conditions.
2. Drive the anchor to its required depth using a re-usable Hulk Smasher driving rod and a hammer. For high volume anchoring Smasher Rods are available in powered versions for use with commercially available hammers.
3. Once the Hulk Earth Anchor has reached its installation depth, the re-usable Smasher Rod can be removed for use on the next anchor.
4. An upward pull on the Hulk Earth Anchor tendon rotates the anchor into an anchor locked position. Keep the load plate and wire vice in position to maintain tension on the tendon. If engineered loads are required proof testing equipment is available.
5. Trim the excess rope with a cutter.

## HULK TRM ANCHOR KITS:

Kit Code	Description	Anchor Soil Bearing Area	Assembly Capacity UTS*
HP25-TRK	HP25 Hulk anchor c/w 3mm x 1.2m S/S cable, wedge grip and Hulk Load spreader plate	18.4cm <sup>2</sup>	4kN
HP35-TRK	HP35 Hulk anchor c/w 3mm x 1.2m S/S cable, wedge grip and Hulk Load spreader plate	38.9cm <sup>2</sup>	6.4kN
H50-TRK	H50 Hulk anchor c/w 3mm x 1.2m S/S cable, wedge grip and Hulk Load spreader plate	69.3cm <sup>2</sup>	6.4kN
HP35R-TRK	HP35 Hulk anchor 10mm X 1.5m galvanised rod and 150 X 150 X 5mm load plate, nut and washer	38.9cm <sup>2</sup>	22kN
H50R-TRK	50 Hulk anchor c/w 14mm X 1.5m galvanised rod and 150 X 150 X 5mm load plate, nut and washer	69.3cm <sup>2</sup>	45kN

\*Performance of the system is substrate dependant. Additional assemblies are available on request.

For further advice and technical support visit [www.hulkearthanchors.com](http://www.hulkearthanchors.com) or call 1300 692 626



[www.hulkearthanchors.com](http://www.hulkearthanchors.com)  
1300 692626

Distributed By:

Chris Navarro  
Mobile: 0400 214 627



[chris@percussionearthanchors.com.au](mailto:chris@percussionearthanchors.com.au)  
[www.percussionearthanchors.com.au](http://www.percussionearthanchors.com.au)

